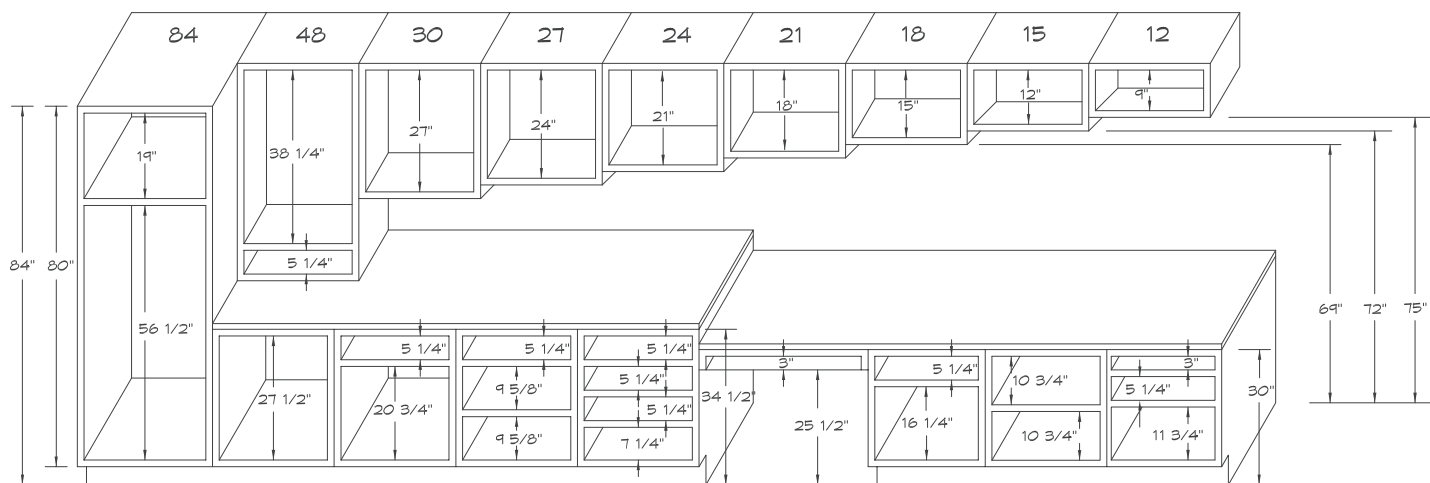


**planning guides & specifications**

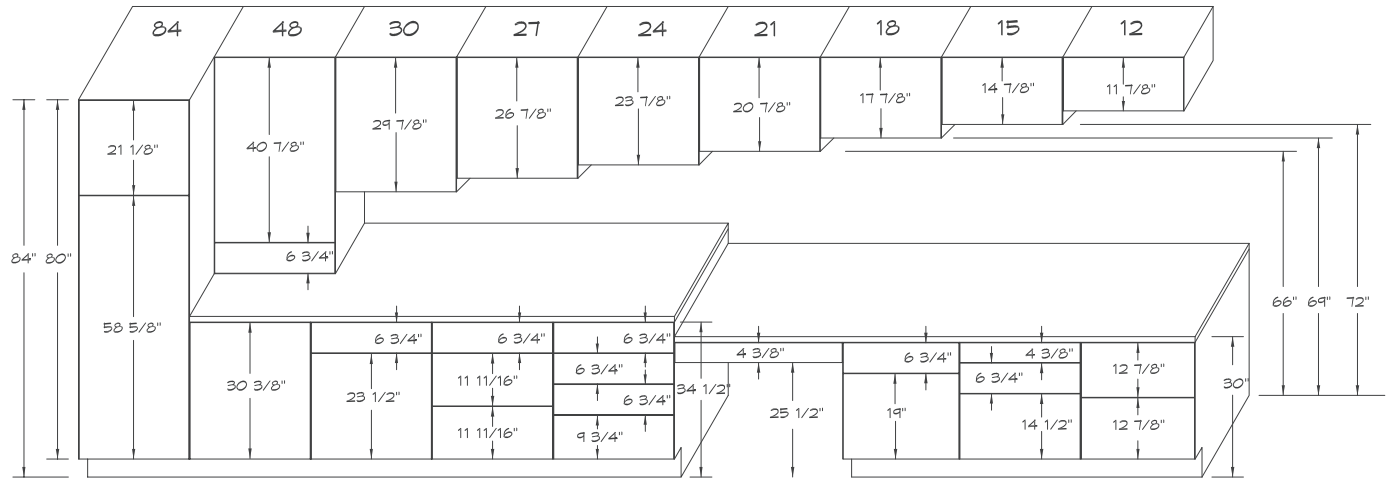


DIMENSIONS INDICATED ARE  
ACCURATE TO THE NEAREST 1/16"

THIS DRAWING SHOWS DOOR/DRAWER OPENING SIZES FOR FACE FRAME CABINETS.  
THIS DOES NOT SHOW DOOR/DRAWER FACE DIMENSIONS.  
PLEASE NOTE THAT DOOR/DRAWER FACE FRAME SIZES WILL VARY  
DEPENDANT ON CABINET USED: INSET OR FULL OVERLAY



# 84 - planning guides 16-03 detailed specification



DIMENSIONS INDICATED ARE  
ACCURATE TO THE NEAREST 1/16"

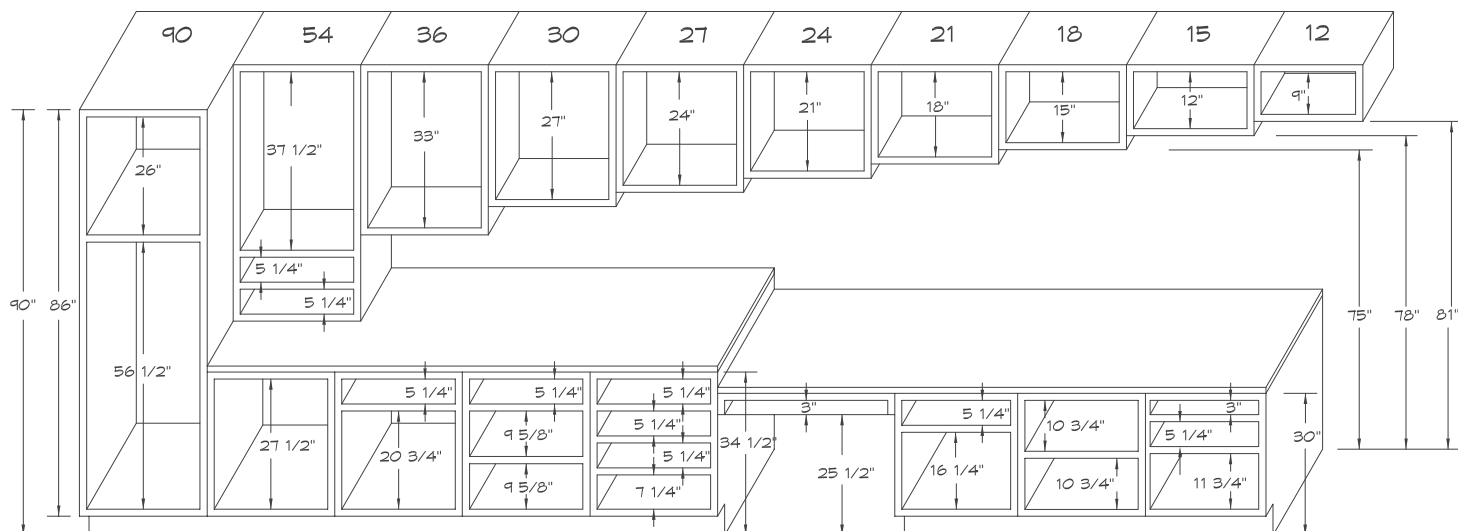
THIS DRAWING SHOWS DOOR/DRAWER FACE DIMENSIONS FOR FRAMELESS CABINETS.

THIS DOES NOT SHOW DOOR/DRAWER OPENING SIZES.

SIZES INDICATED ALLOW FOR 1/8" REVEALS AT TOP OF WALL & BASE CABINETS & BETWEEN DOORS/DRAWERS

16-04 planning guides - 90  
detailed specifications

**OVATION**  
C A B I N E T R Y

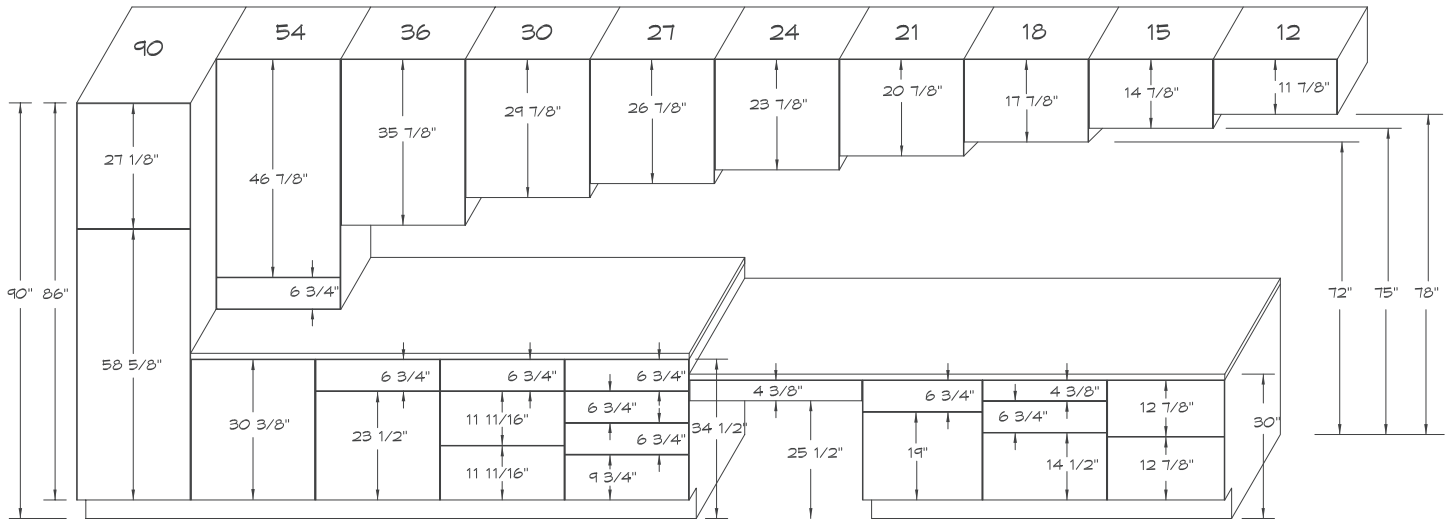


DIMENSIONS INDICATED ARE  
ACCURATE TO THE NEAREST 1/16"

THIS DRAWING SHOWS DOOR/DRAWER OPENING SIZES FOR FACE FRAME CABINETS.  
THIS DOES NOT SHOW DOOR/DRAWER FACE DIMENSIONS.  
PLEASE NOTE THAT DOOR/DRAWER FACE FRAME SIZES WILL VARY  
DEPENDANT ON CABINET USED: INSET OR FULL OVERLAY



# 90 - planning guides 16-05 detailed specification

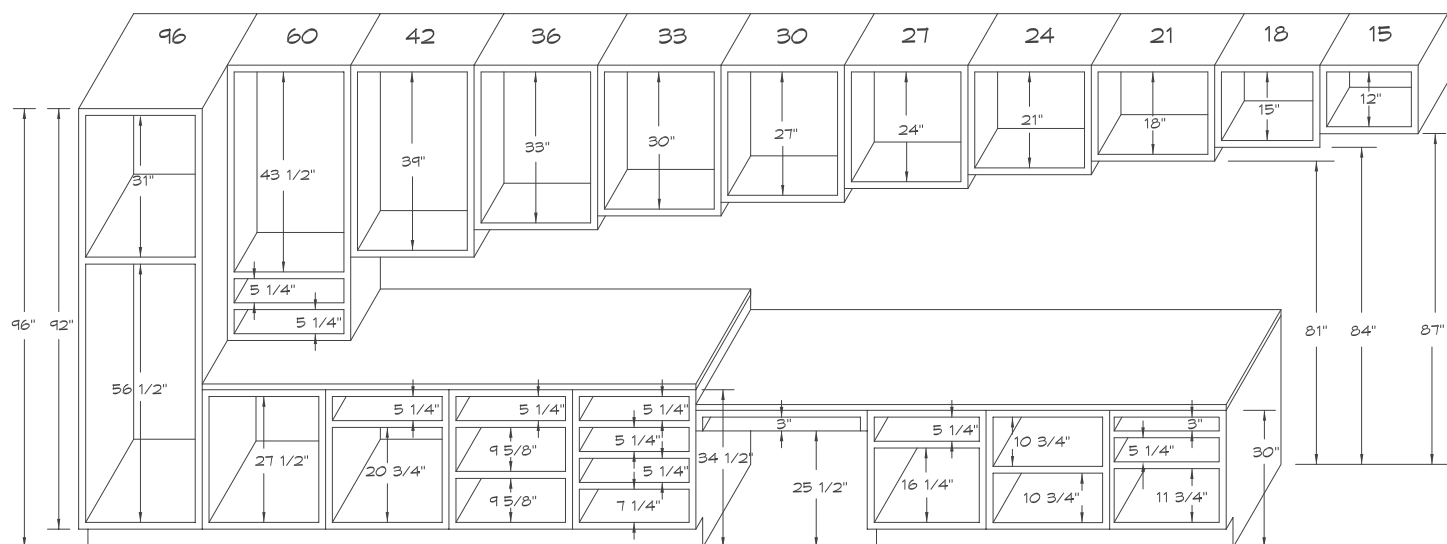


DIMENSIONS INDICATED ARE  
ACCURATE TO THE NEAREST 1/16"

THIS DRAWING SHOWS DOOR/DRAWER FACE DIMENSIONS FOR FRAMELESS CABINETS.

THIS DOES NOT SHOW DOOR/DRAWER OPENING SIZES.

SIZES INDICATED ALLOW FOR 1/8" REVEALS AT TOP OF WALL & BASE CABINETS & BETWEEN DOORS/DRAWERS

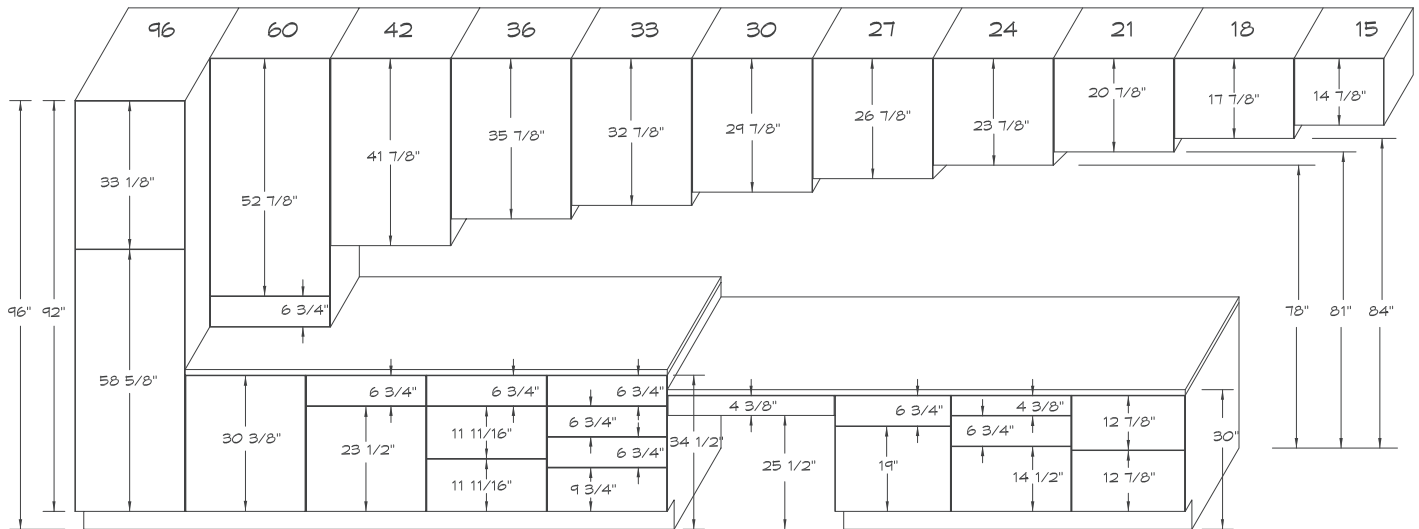


DIMENSIONS INDICATED ARE  
ACCURATE TO THE NEAREST 1/16"

THIS DRAWING SHOWS DOOR/DRAWER OPENING SIZES FOR FACE FRAME CABINETS.  
THIS DOES NOT SHOW DOOR/DRAWER FACE DIMENSIONS.  
PLEASE NOTE THAT DOOR/DRAWER FACE FRAME SIZES WILL VARY  
DEPENDANT ON CABINET USED: INSET OR FULL OVERLAY



# 96 - planning guides 16-07 detailed specification



DIMENSIONS INDICATED ARE  
ACCURATE TO THE NEAREST 1/16"

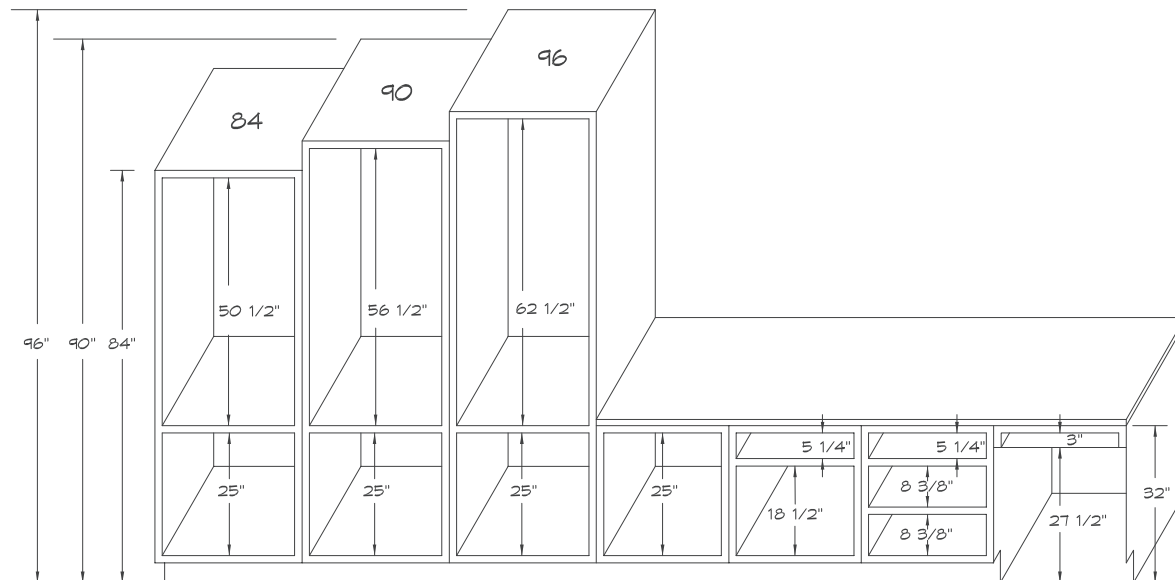
THIS DRAWING SHOWS DOOR/DRAWER FACE DIMENSIONS FOR FRAMELESS CABINETS.

THIS DOES NOT SHOW DOOR/DRAWER OPENING SIZES.

SIZES INDICATED ALLOW FOR 1/8" REVEALS AT TOP OF WALL & BASE CABINETS & BETWEEN DOORS/DRAWERS

# 16-08 planning guides - vanity detailed specifications

# OVATION C A B I N E T R Y



DIMENSIONS INDICATED ARE ACCURATE TO THE NEAREST 1/16"  
VANITY HEIGHT OF 32" SHOWN. PLEASE NOTE THAT USING 34 1/2" HEIGHT WILL AFFECT SIZES SHOWN.

THIS DRAWING SHOWS DOOR/DRAWER OPENING SIZES FOR FACE FRAME CABINETS.

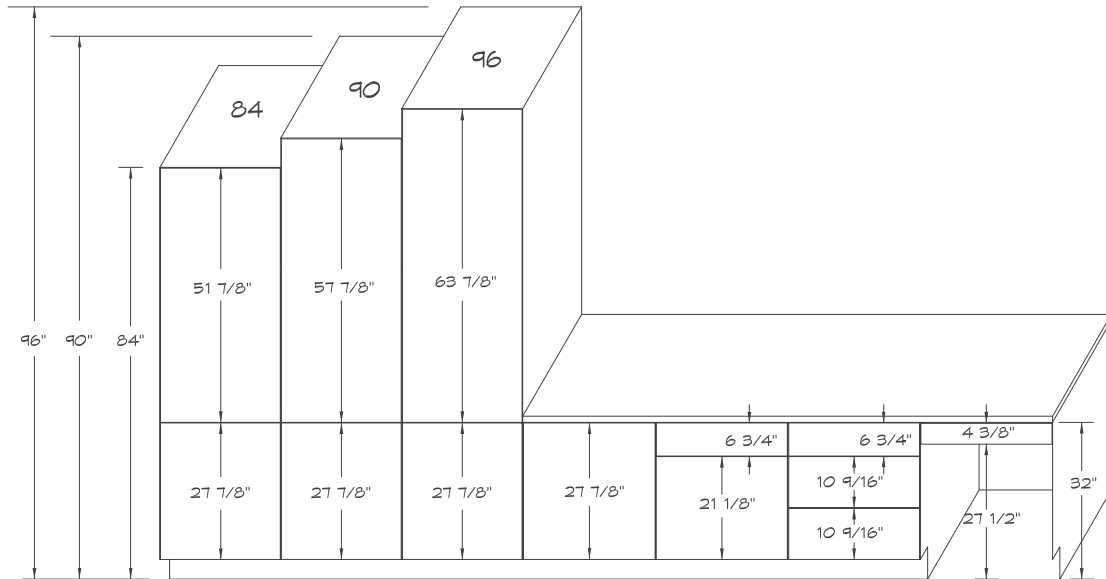
THIS DOES NOT SHOW DOOR/DRAWER FACE DIMENSIONS.

PLEASE NOTE THAT DOOR/DRAWER FACE FRAME SIZES WILL VARY  
DEPENDANT ON CABINET USED: INSET OR FULL OVERLAY



# Segue vanity - planning guides 16-09

by Ovation detailed specification



DIMENSIONS INDICATED ARE  
ACCURATE TO THE NEAREST 1/16"

THIS DRAWING SHOWS DOOR/DRAWER FACE DIMENSIONS FOR FRAMELESS CABINETS.

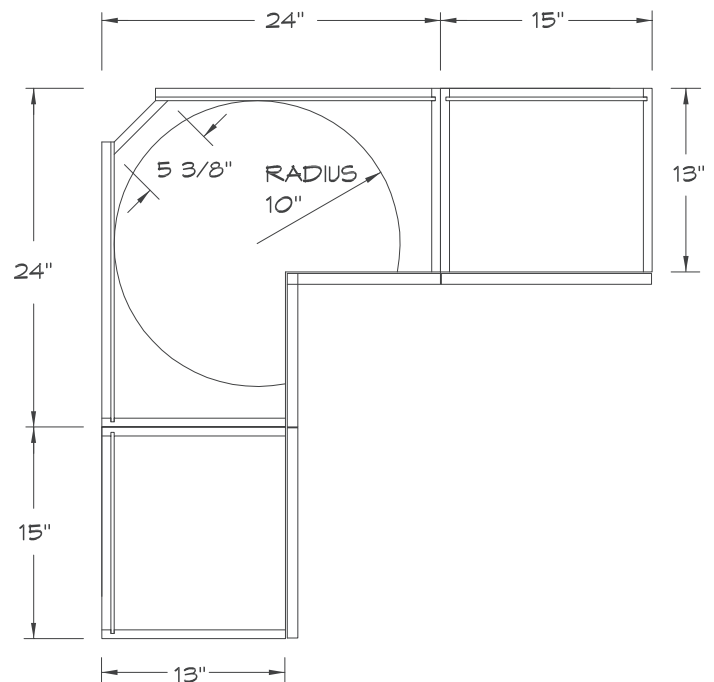
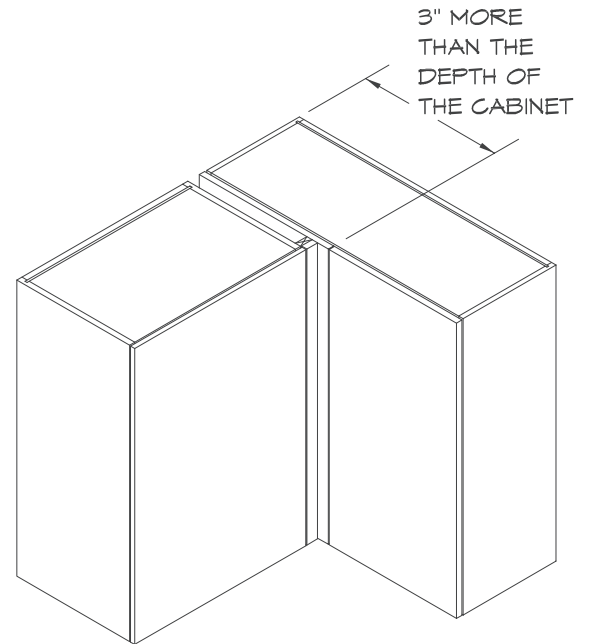
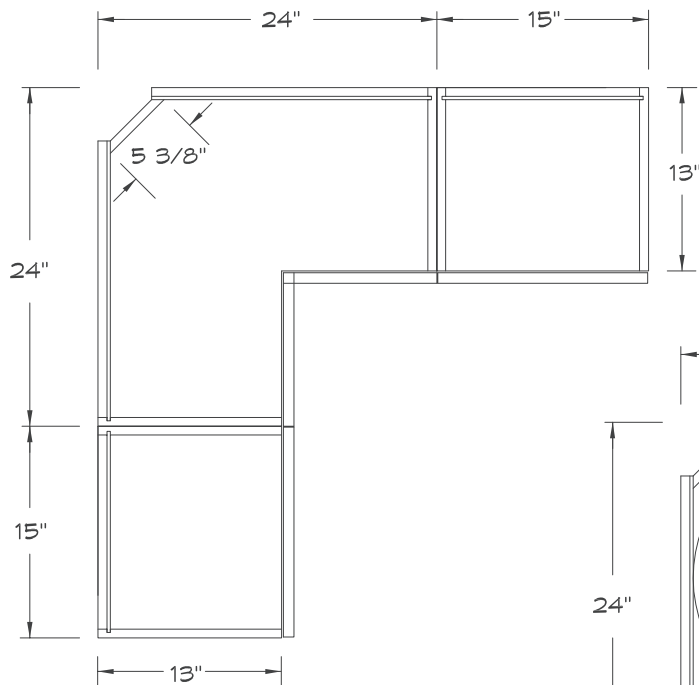
THIS DOES NOT SHOW DOOR/DRAWER OPENING SIZES.

SIZES INDICATED ALLOW FOR 1/8" REVEALS AT TOP OF WALL & BASE CABINETS & BETWEEN DOORS/DRAWERS

# 16-10 specifications - wall cabinets blind corner

## BLIND CORNER WALL CABINETS

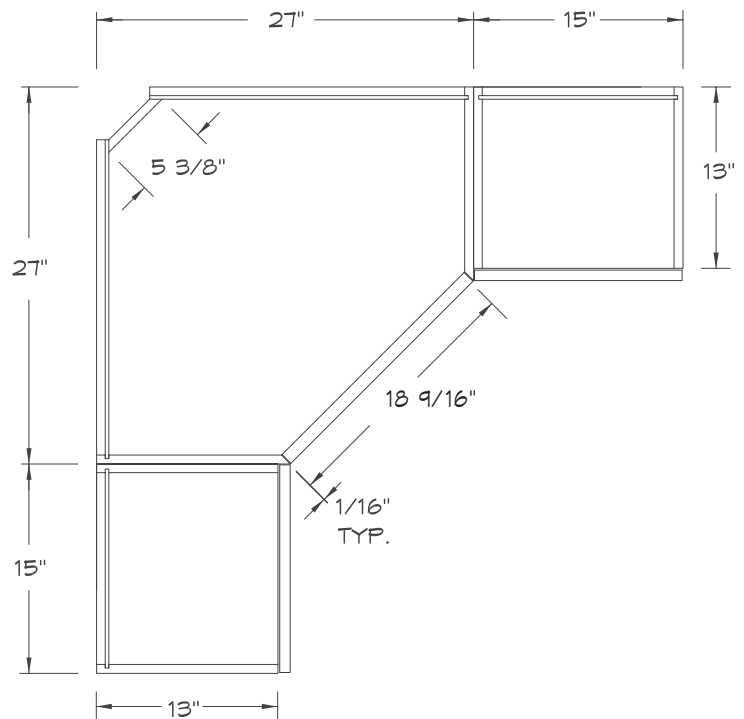
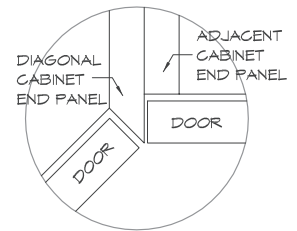
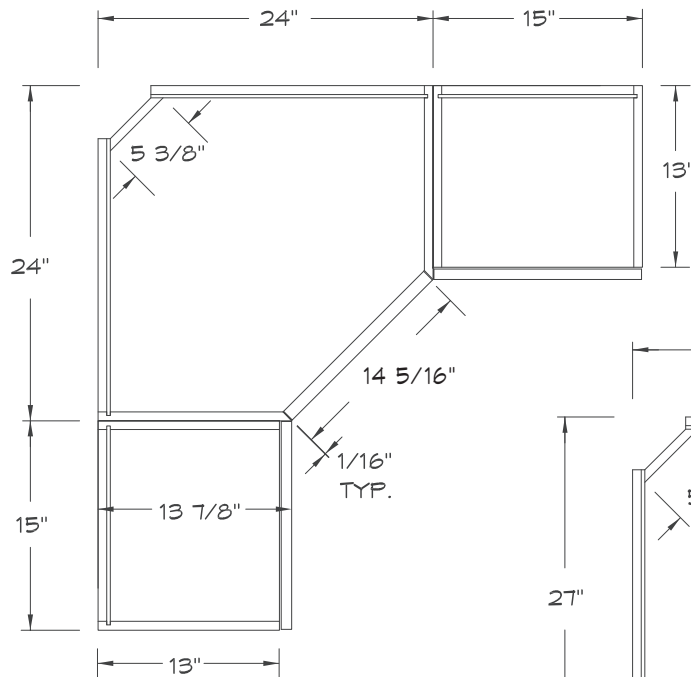
BLIND CORNER WALL CABINETS WILL HAVE A FLUSH BLIND. CABINET MAY BE PULLED AS FAR AS NECESSARY. A FILLER MUST BE USED FOR CLEARANCE WITH THE ADJACENT CABINET. (ORDER SEPARATELY).



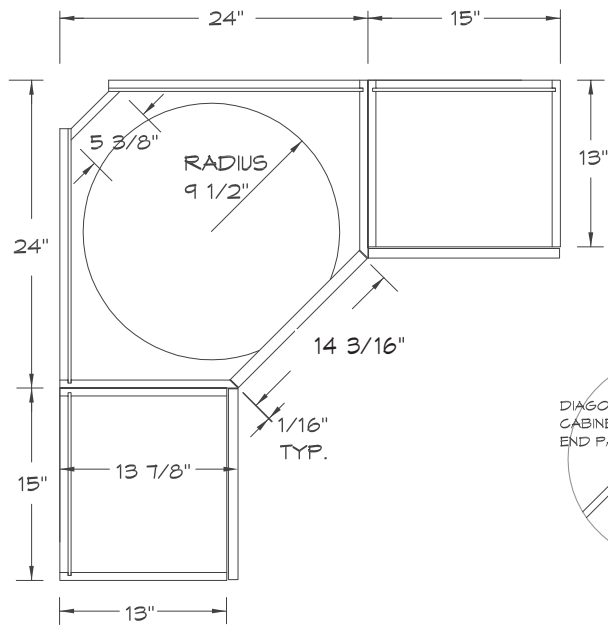
# specifications - wall cabinets 16-11

## diagonal end panel

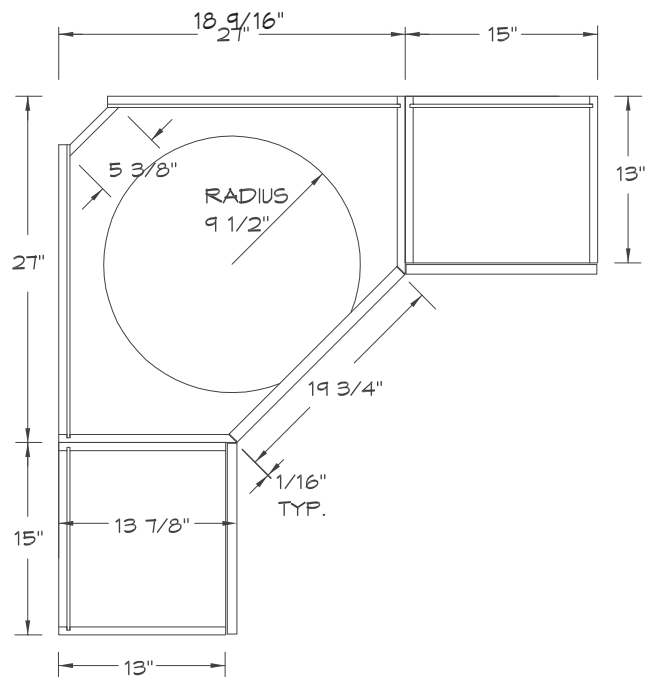
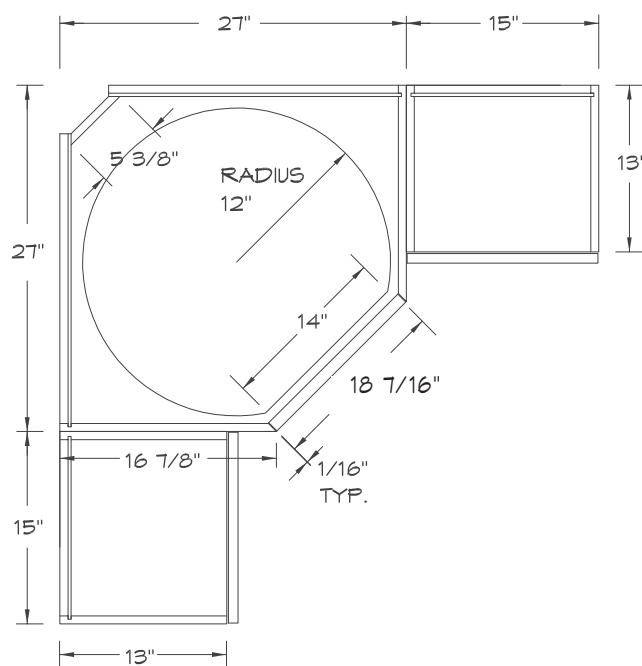
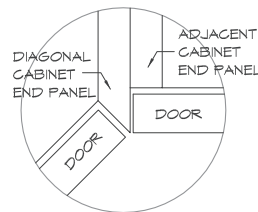
END PANEL OF THE DIAGONAL IS 13 7/8" DEEP AND IS ANGLED TO RECEIVE THE DOOR (LIKE AN INSET CABINET). BOTH SIDES OF A DIAGONAL COME FINISHED AUTOMATICALLY ON ON:U ONLY.



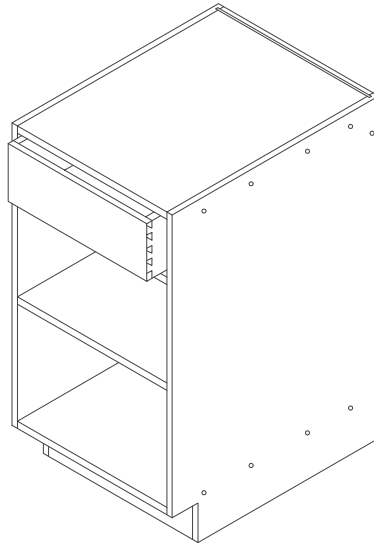
# 16-12 specifications - wall cabinets diagonal



END PANEL OF THE DIAGONAL IS 13 7/8" DEEP AND IS ANGLED TO RECEIVE THE DOOR (LIKE AN INSET CABINET). BOTH SIDES OF A DIAGONAL COME FINISHED AUTOMATICALLY IN ON:U ONLY.



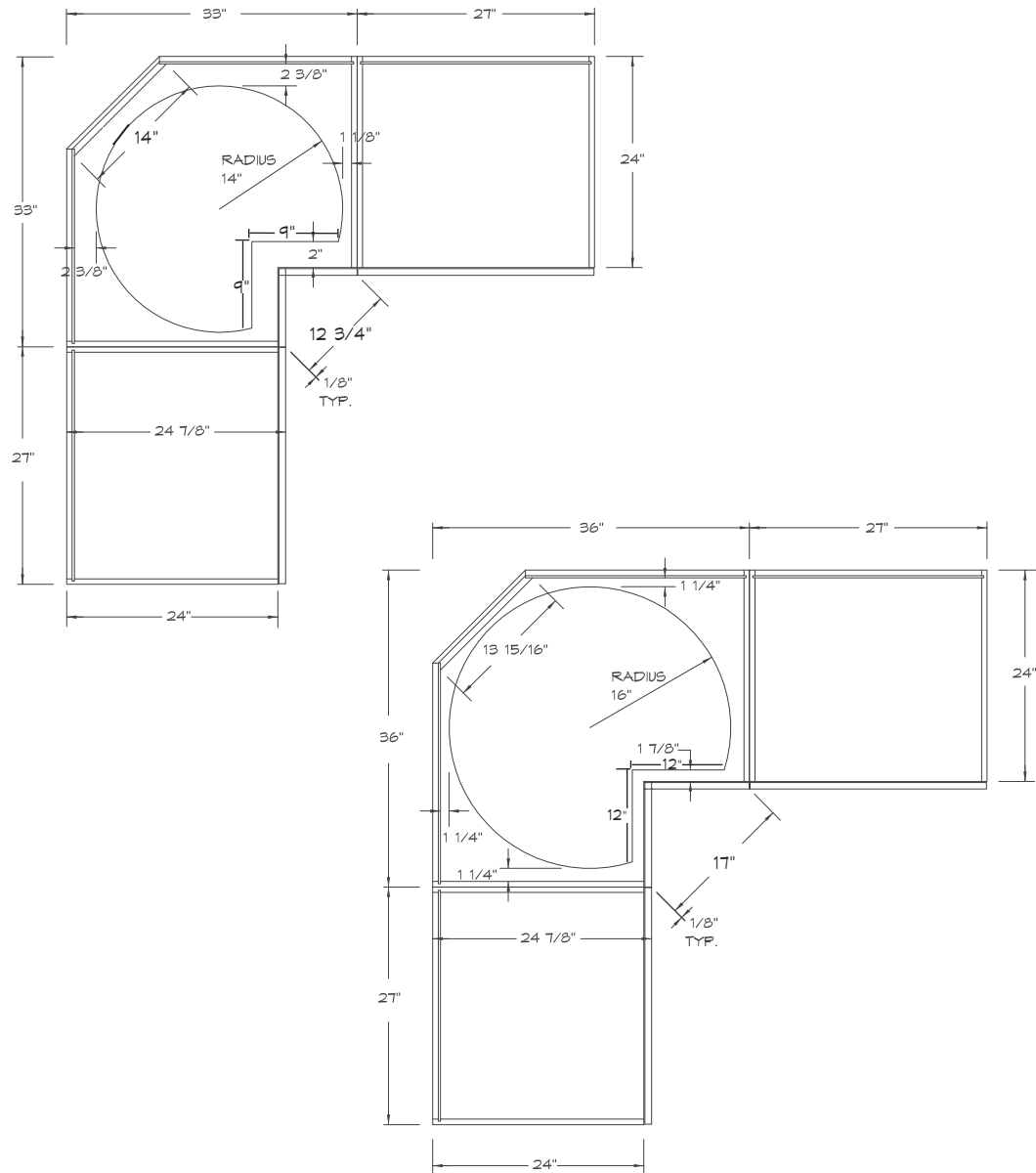
## specifications - base cabinets 16-13 wider, narrower



FOR CABINETS NARROWER  
THAN 15" IN WIDTH, THE  
DRAWER BOTTOM GRAIN  
CAN RUN FRONT TO BACK  
OR SIDE TO SIDE.

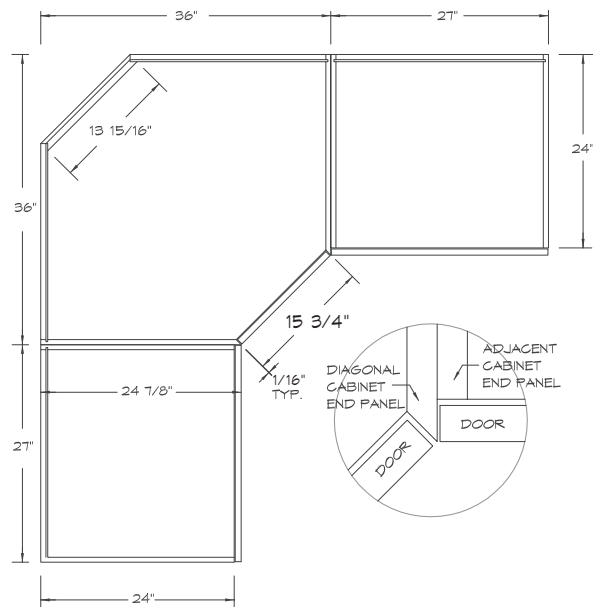
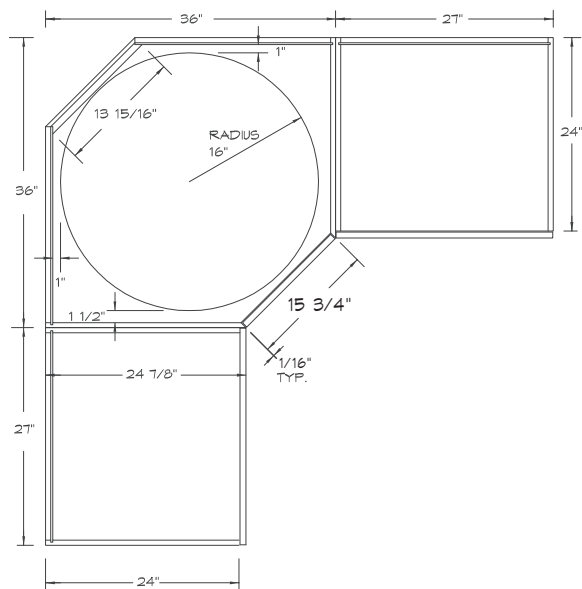
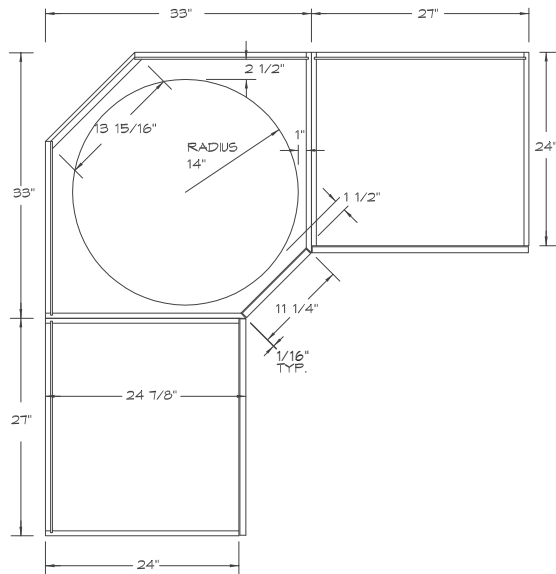
## 16-14 specifications - base cabinets corner

### BASE CORNER CABINETS



# specifications - base cabinets 16-15 diagonal

## BASE DIAGONAL CABINETS

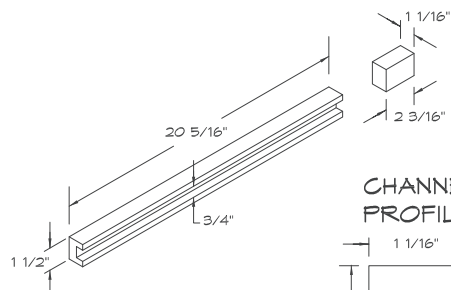


END PANEL OF THE DIAGONAL IS 24 7/8" DEEP AND IS ANGLED TO RECEIVE THE DOOR (LIKE AN INSET CABINET). BOTH SIDES OF A DIAGONAL COME FINISHED AUTOMATICALLY IN ON:U ONLY.

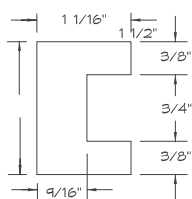
# 16-16 specifications - base cabinets cutting board cabinets

CUTTING BOARD (CBD) CABINETS  
AVAILABLE IN AMENITY ONLY

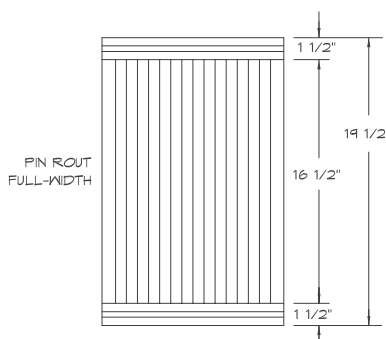
SLIDE DETAIL WITH  
TERMINATION BLOCK



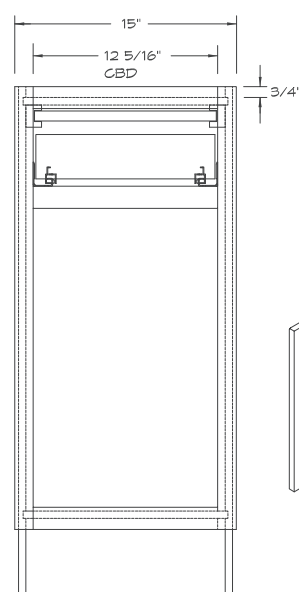
CHANNEL  
PROFILE



CBD DETAIL

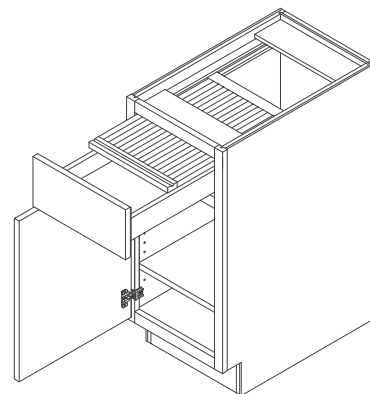
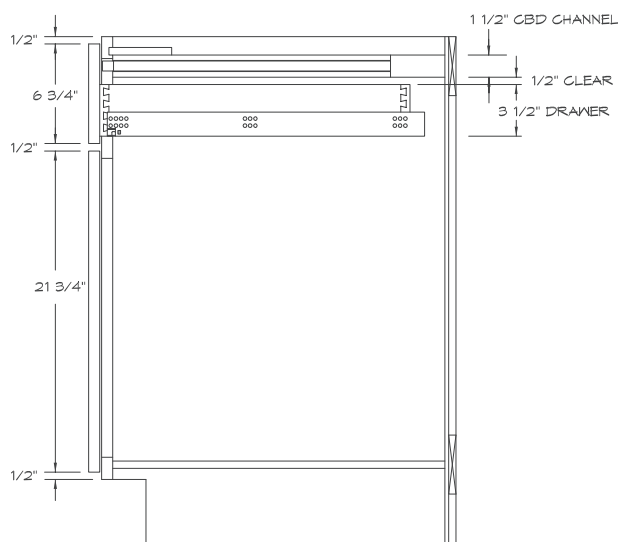


INSTALLED WITH 3 1/2"  
DRAWER BELOW



CBD IS 2 11/16" NARROWER THAN THE WIDTH OF CASE. CBD IS 3" SHORTER THAN THE DEPTH OF CASE. SLIDE IS 3 11/16" SHORTER THAN THE DEPTH OF CASE. TERMINATION BLOCK IS THE REMAINDER TO THE FACE SIDE OF THE BACK. TYPICALLY 2 3/16" LONG. WHEN DRAWER IS FULLY OPENED, CBD CAN BE REMOVED.

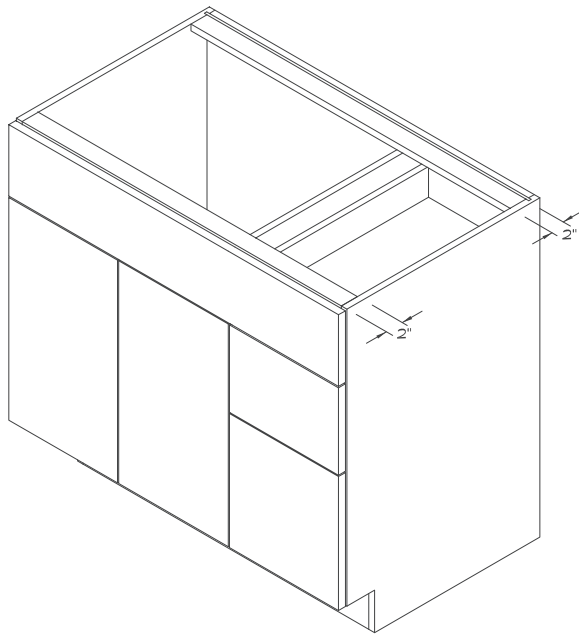
SECTION DETAIL





# specifications - base cabinets 16-17 sink

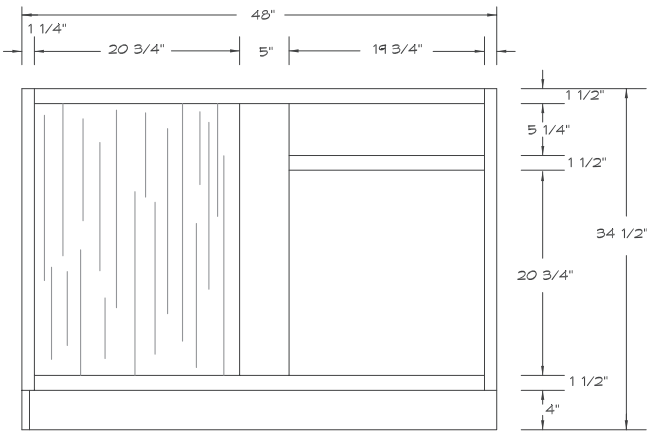
## SINK BASE CABINETS



STRETCHERS IN SINK BASE CABINETS ARE SPECIALLY SIZED SO THAT THE CUT OUTS IN MOST CASES ARE NOT NEEDED.

# 16-18 specifications - cabinets blind corner

## BLIND CORNER CABINET

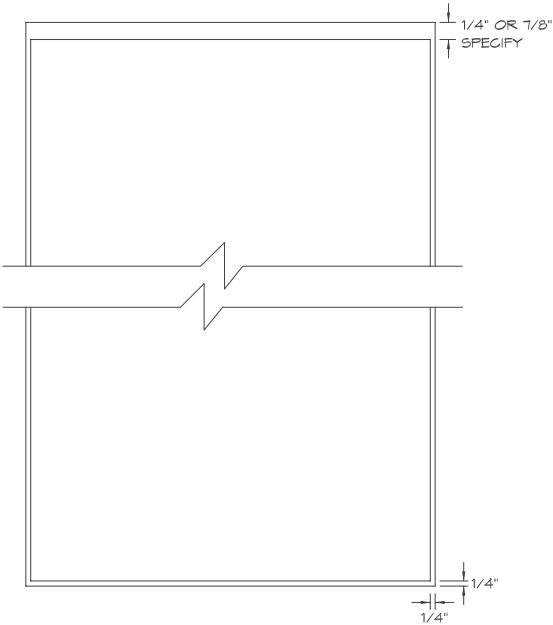


AMENITY ONLY  
SPECIFICATIONS

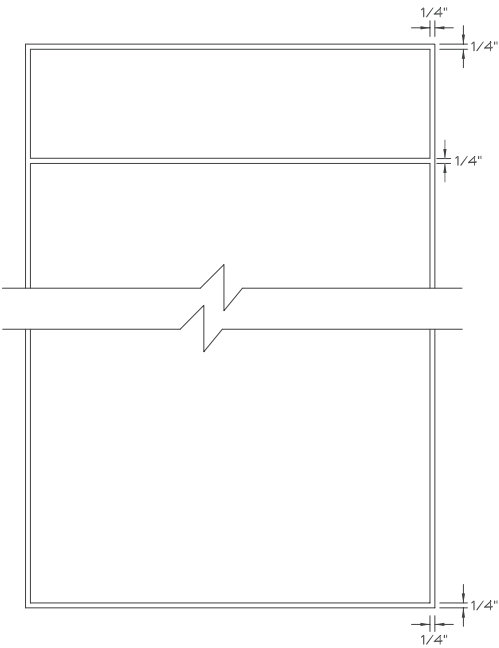
### OPENINGS:

BBC36	7 3/4"
BBC39	10 3/4"
BBC42	13 3/4"
BBC45	16 3/4"
BBC48	19 3/4"

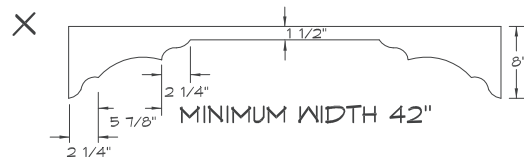
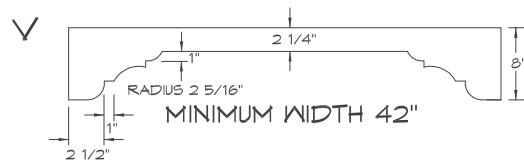
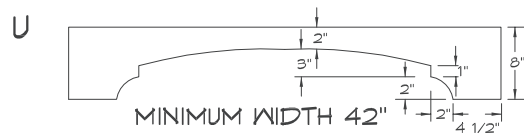
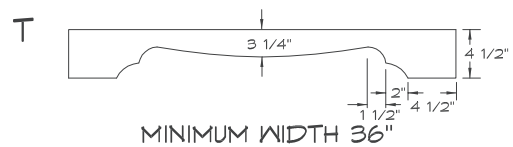
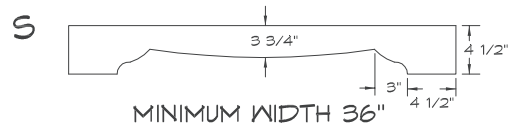
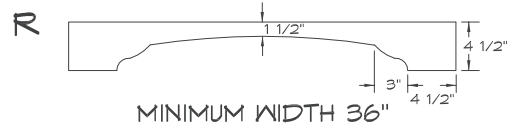
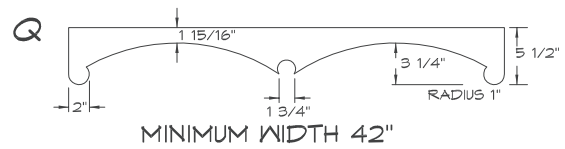
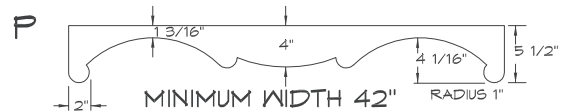
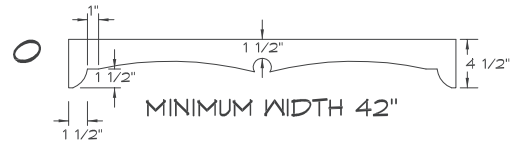
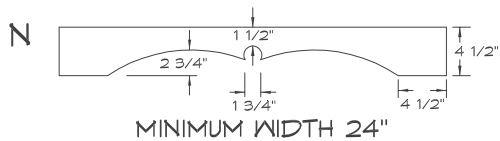
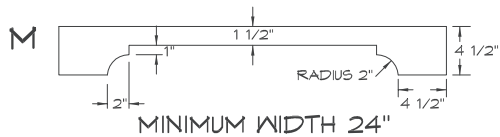
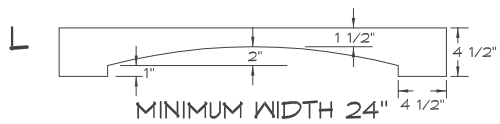
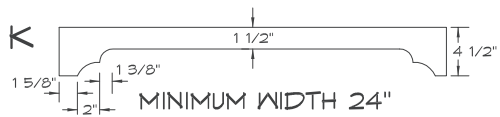
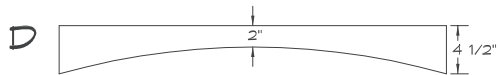
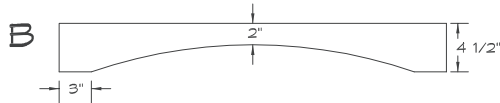
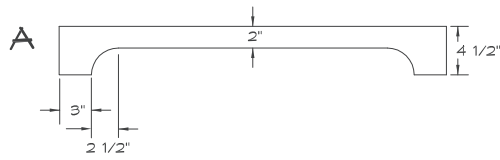
## WALL AND TALL CABINETS



## BASE AND VANITY CABINETS

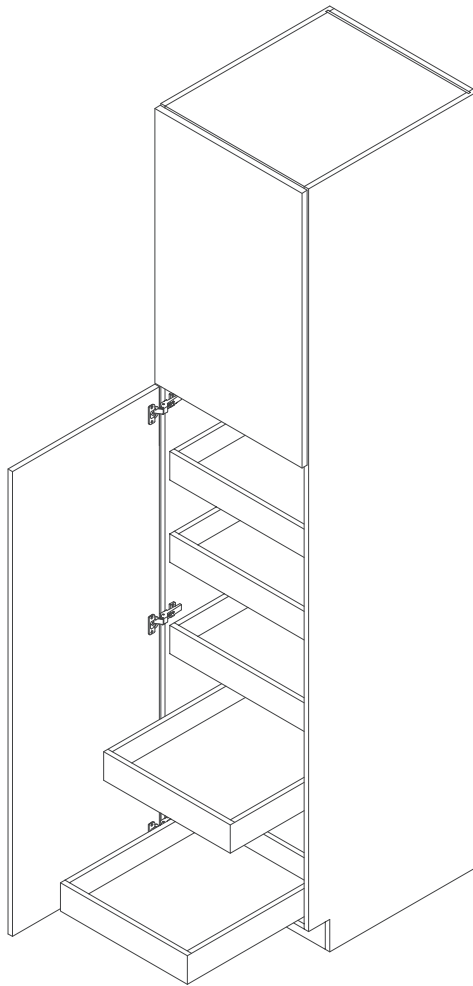


# specifications - valances 16-19



# 16-20 specifications - cabinets height restrictions

## HEIGHT RESTRICTIONS

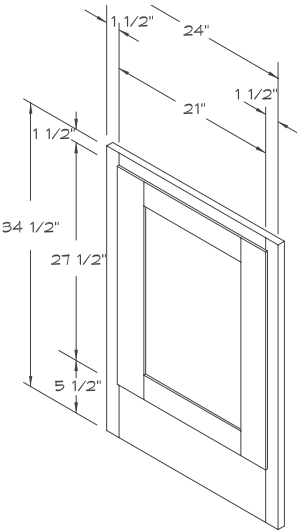


CABINETS ABOVE 96" TALL ARE  
DETERMINED BY MATERIAL  
AVAILABILITY.

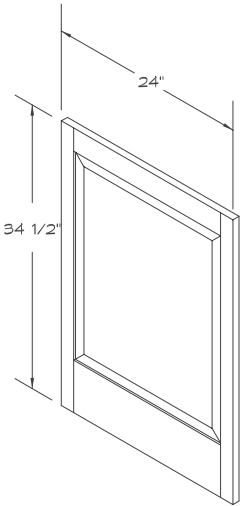
specifications - panels 16-21  
wainscot

WAINSCOT PANELS

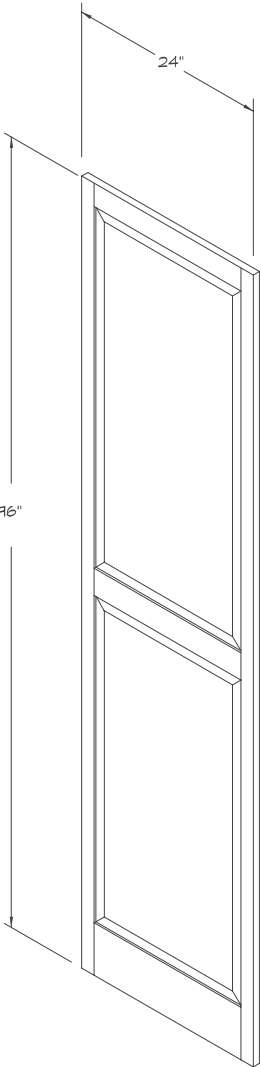
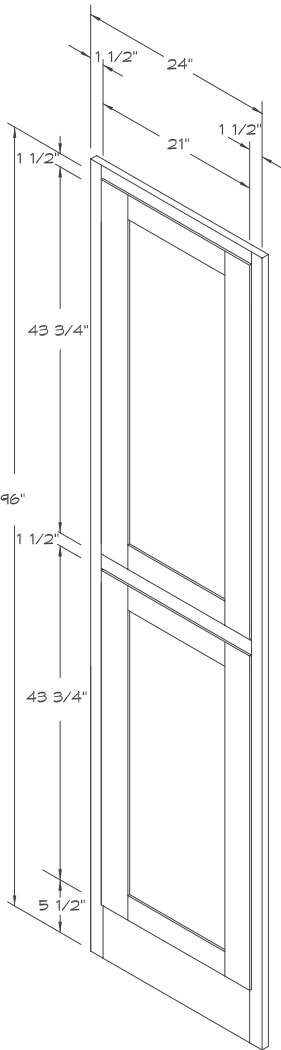
GRATING CHARGES MAY APPLY  
FOR PANELS WITH DIMENSIONS  
EXCEEDING 90"



INSET WAINSCOT PANELS

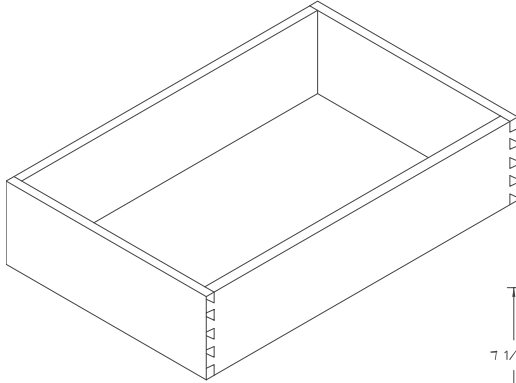


OVERLAY WAINSCOT PANELS

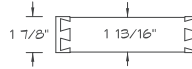


# 16-22 specifications - details drawers and rollouts

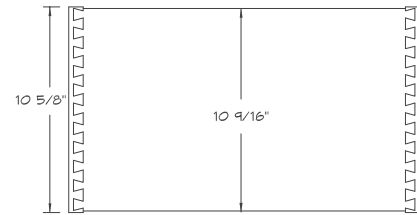
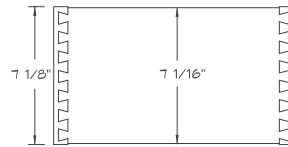
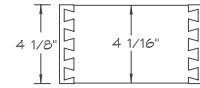
5/8" SIDES  
1/4" BOTTOM  
DOVETAILED CORNERS



FKD



STD TOP DWR



CORNER WING MOULDING

