



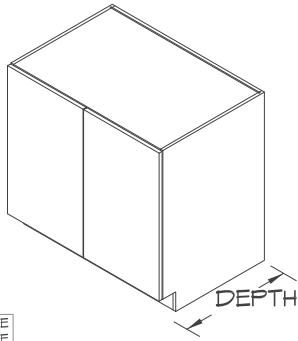
15-02

# modifications and specifications 15-03

## reduce/increase depth/width/height

REDUCE DEPTH

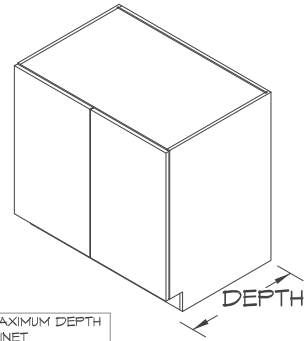
ABBREVIATION  
N/A



WALL	NO CHARGE
BASE	NO CHARGE
TALL	NO CHARGE

INCREASE DEPTH  
UP TO 6"  
UP TO 12"

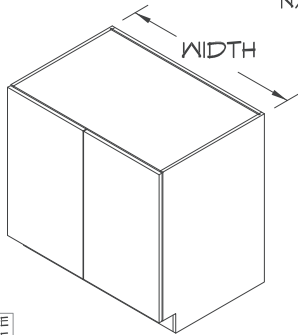
ABBREVIATION  
N/A



DRAWER BOX HAS A MAXIMUM DEPTH OF 24" FOR A 30" CABINET	
MAXIMUM CABINET DEPTH IS 30"	

REDUCE WIDTH

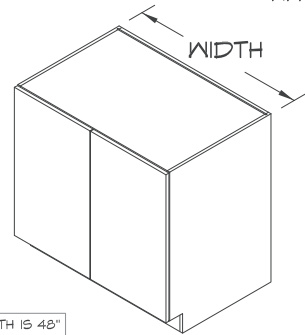
ABBREVIATION  
N/A



WALL	NO CHARGE
BASE	NO CHARGE
TALL	NO CHARGE

INCREASE WIDTH  
UP TO 6"

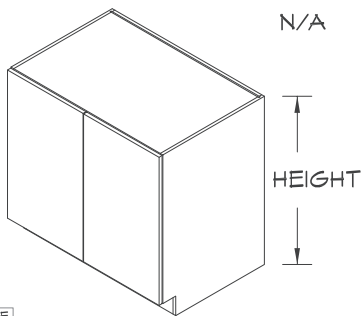
ABBREVIATION  
N/A



AMENITY MAXIMUM WIDTH IS 48"	
ONU MAXIMUM WIDTH IS 42"	

REDUCE HEIGHT

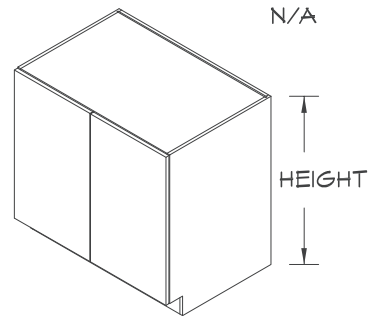
ABBREVIATION  
N/A



WALL	NO CHARGE
BASE	NO CHARGE
TALL	NO CHARGE

INCREASE HEIGHT  
UP TO 6"

ABBREVIATION  
N/A



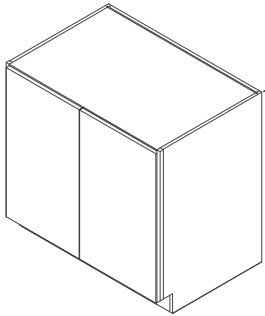
MAXIMUM CABINET HEIGHT IS 96"	
-------------------------------	--

# 15-04 modifications and specifications

## finished ends, gable ends, extend stile, wide rail

### FINISHED ENDS

ABBREVIATION



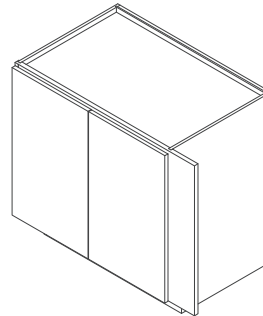
AMENITY -  
+/- 3/32"  
REVEAL

ON:U -  
FLUSH, NO  
REVEAL

### EXTEND STILE

ABBREVIATION

ES-L/R

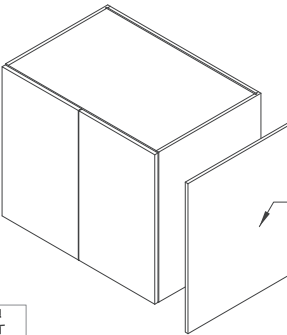


AVAILABLE ONLY IN  
AMENITY CABINETS.  
NOT AVAILABLE IN ON:U

### GABLE ENDS

ABBREVIATION

N/A



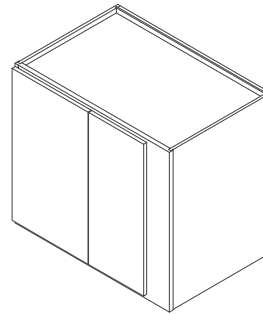
GABLE END WILL BE  
PLAIN OR DECORATIVE.  
DECORATIVE WILL BE  
DESIGNED TO MATCH  
CHOSEN DOOR STYLE.

AVAILABLE ONLY IN  
ON:U CABINETS, NOT  
AVAILABLE IN AMENITY

### EXTEND STILE INWARD

ABBREVIATION

ES-IN\_\_-L/R

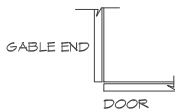


AVAILABLE ONLY IN  
AMENITY CABINETS.  
NOT AVAILABLE IN ON:U

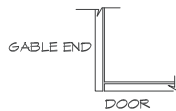
### GABLE END OPTIONS

A

B



PLAN VIEW OF  
CABINET DETAIL



PLAN VIEW OF  
CABINET DETAIL

### WIDTH DIMENSIONS

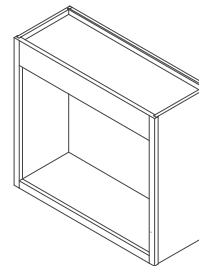
13	13 7/8
15	15 7/8
18	18 7/8
21	21 7/8
24	24 7/8

SPECIFY HINGE.  
MATCHING BACKS MAY OR MAY NOT  
BE AVAILABLE. CHECK WITH CUSTOMER  
SERVICE IF REQUIRED

### WIDE RAIL

ABBREVIATION

WRDL

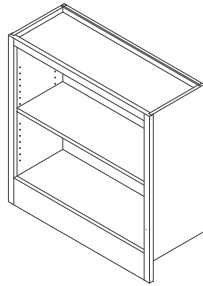


AVAILABLE ONLY IN  
AMENITY CABINETS.  
NOT AVAILABLE IN ON:U

# modifications and specifications 15-05 rail, side panel, end panel back, valance - extensions

EXTEND RAIL DOWN

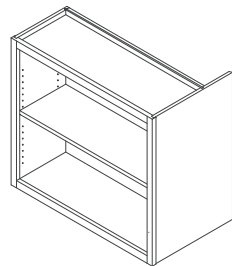
ABBREVIATION  
ERD



AVAILABLE ONLY IN  
AMENITY CABINETS.  
NOT AVAILABLE IN ON:U

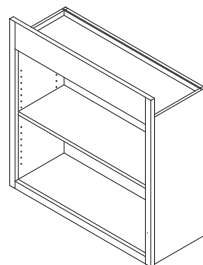
EXTEND END PANEL BACK

ABBREVIATION  
EP\_B-L/R



EXTEND RAIL UP

ABBREVIATION  
ERU

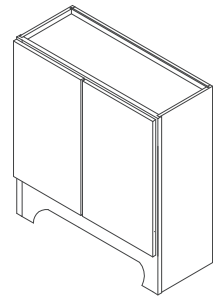
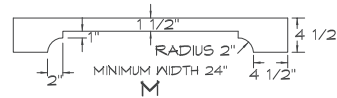
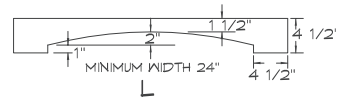
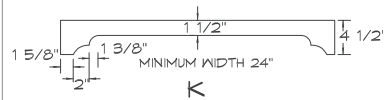
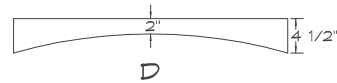
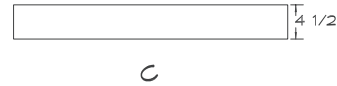
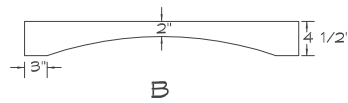
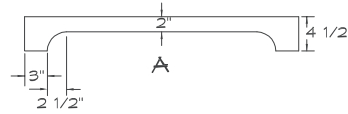


AVAILABLE ONLY IN  
AMENITY CABINETS.  
NOT AVAILABLE IN ON:U

EXTEND VALANCE DOWN

ABBREVIATION  
EVD

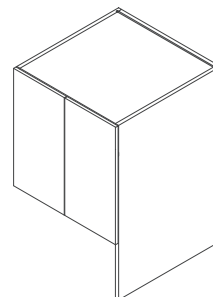
AVAILABLE VALANCES



AVAILABLE ONLY IN  
AMENITY CABINETS.  
NOT AVAILABLE IN ON:U

EXTEND SIDE DOWN

ABBREVIATION  
ESD



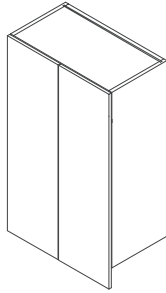
15-06

modifications and specifications

extend door down/right/left, extend side/panel, wall recess floor

WALL EXTEND DOOR DOWN

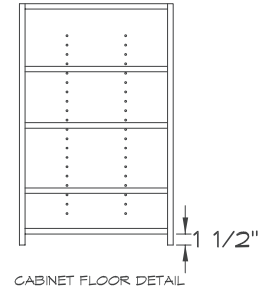
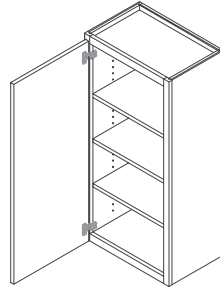
ABBREVIATION  
N/A



AVAILABLE ONLY IN  
ON-UNIT CABINETS. NOT  
AVAILABLE IN AMENITY

WALL RECESS FLOOR

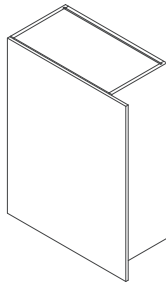
ABBREVIATION  
WREC-\_\_



RAIL BELOW CABINET FLOOR.  
REGARDLESS OF FINISHED ENDS,  
DOOR HEIGHT IS 1/8" LESS THAN  
NOMINAL CALLED OUT CASE HEIGHT

EXTEND DOOR RIGHT/LEFT

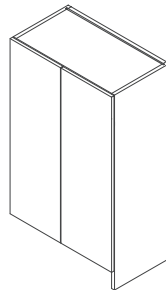
ABBREVIATION  
EDR-\_\_-RT/LT



AVAILABLE ONLY IN  
ON-UNIT CABINETS. NOT  
AVAILABLE IN AMENITY

WALL EXTEND SIDE DOWN

ABBREVIATION  
ESD-\_\_-RT/LT



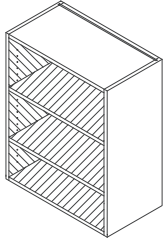
# modifications and specifications 15-07

## matching veneer or melamine interior, butt doors, finished top /bottom, center stile

### MATCHING VENEER INTERIOR

ABBREVIATION

MVI

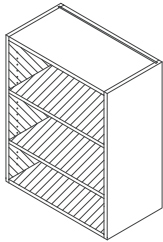


MVI INCLUDES FINISHED (STAINED OR PAINTED) BOTTOM. BOTTOM IS NOT FLUSH BOTTOM.

### MATCHING MELAMINE INTERIOR

ABBREVIATION

MMI

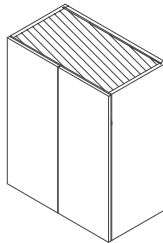


MMI INCLUDES FINISHED BOTTOM.

### TOP FINISHED

ABBREVIATION

TP-FIN

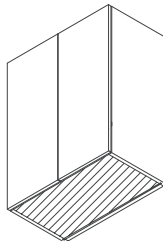


AVAILABLE ONLY IN ON:J CABINETS. NOT AVAILABLE IN AMENITY.

### BOTTOM FINISHED

ABBREVIATION

BT-FIN

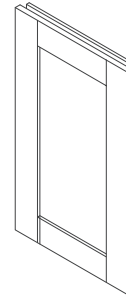


FLUSH FINISHED BOTTOM NOT AVAILABLE IN AMENITY. FLUSH FINISHED BOTTOM IN ON:J ONLY. SEE ACCESSORY SECTION FOR UNDER CABINET PANELING AND TRIM MOULDING.

### FACE FRAME AND DOOR

ABBREVIATION

FF/D

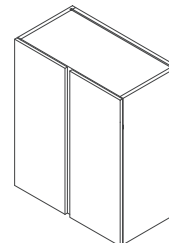


AVAILABLE ONLY IN AMENITY CABINETS. NOT AVAILABLE IN ON:J

### CENTER STILE

ABBREVIATION

CS



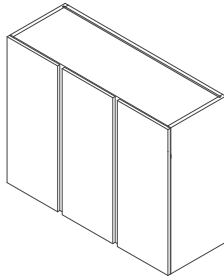
39" - 42" WIDE CABINETS HAVE A CENTER STILE IN AMENITY WITH BUTT DOORS

# 15-08 modifications and specifications

add door, add drawer, intermediate floor, relocate door, add door panel, peninsula cabinet

## ADD A DOOR

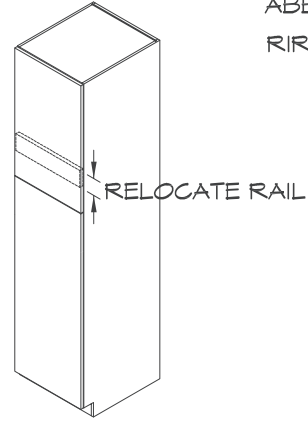
ABBREVIATION  
ADD



THIS MODIFICATION ADDS ONE MORE HINGED DOOR TO A CABINET.

## RELOCATE DOOR PLACEMENT

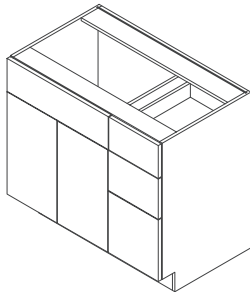
ABBREVIATION  
RIR



ALLOWS THE SIZE OF THE CABINET FRONTS TO BE REARRANGED.

## ADD A DRAWER

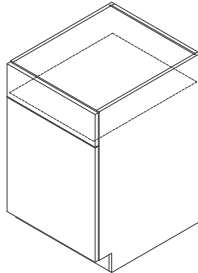
ABBREVIATION  
ADR



THIS MODIFICATION ADDS ONE MORE WORKING DRAWER TO A CABINET.

## INTERMEDIATE FLOOR

ABBREVIATION  
IRF

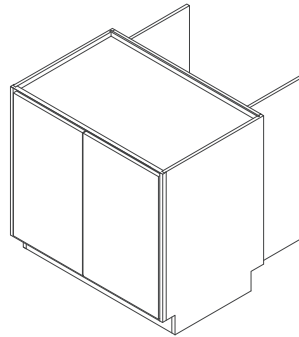


THIS MODIFICATION ALLOWS A CABINET TO BE DIVIDED WITH A FIXED FLOOR. THIS DOES NOT CHANGE THE NUMBER OF DOORS ON THE CABINET.

IN AMENITY, AN INTERMEDIATE FACE FRAME RAIL WILL ALSO BE ADDED.

## PENINSULA CABINET

ABBREVIATION  
PENINSULA



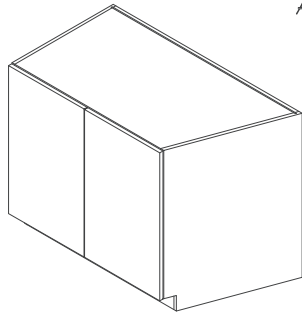


# modifications and specifications 15-09 end, front, reverse back, end w/door, corner, corner w/flutes - angles

ANGLE END

ABBREVIATION

AE-R/L  
AE45-R/L

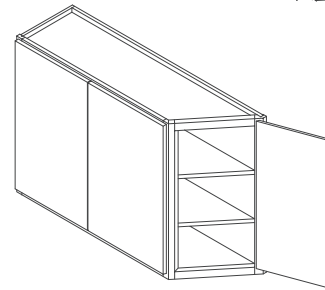


45° OR 22 1/2° ONLY

ANGLE END WITH DOOR

ABBREVIATION

AEND  
AEND45-R/L

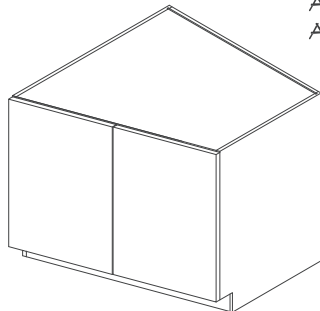


AVAILABLE ONLY IN  
AMENITY CABINETS.  
NOT AVAILABLE IN ONU

ANGLE FRONT

ABBREVIATION

AF-R/L  
AF45-R/L

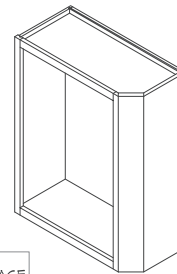


45° OR 22 1/2° ONLY

ANGLE CORNER

ABBREVIATION

AC-R/L



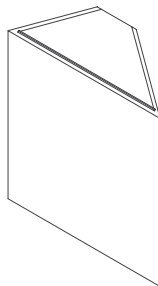
ANGLED CORNER  
MEASURES 4-1/4" ACROSS FACE  
MEASURES 3" ON THE DIAGONAL

AVAILABLE ONLY IN  
AMENITY CABINETS.  
NOT AVAILABLE IN ONU

REVERSE ANGLE BACK

ABBREVIATION

RAB  
RAB45-R/L

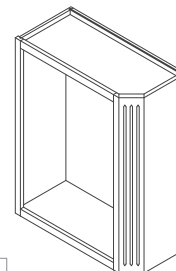


45° OR 22 1/2° ONLY

ANGLE CORNER WITH FLUTES

ABBREVIATION

ACFL-R/L



ANGLED CORNER  
MEASURES 4-1/4" ACROSS FACE  
MEASURES 3" ON THE DIAGONAL

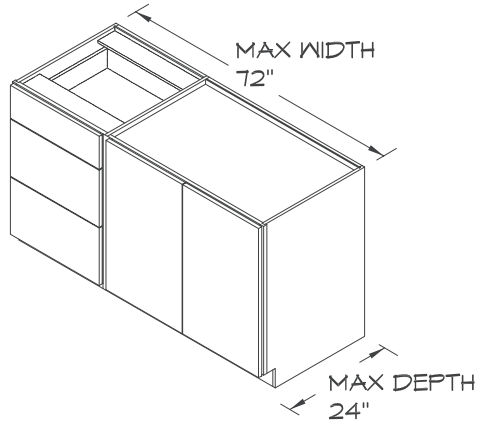
AVAILABLE ONLY IN  
AMENITY CABINETS.  
NOT AVAILABLE IN ONU

# 15-10 modifications and specifications combination, beaded interior back panel, beaded finished end

## COMBINE CABINETS

MAXIMUM COMBINED WIDTH IS 72"  
COMBINED UNITS WILL HAVE A 3/4"  
PARTITION BEHIND COMMON STYLE  
CABINETS TO BE COMBINED MUST  
HAVE COMMON HEIGHTS AND  
DEPTHS.

AVAILABLE ONLY IN  
AMENITY CABINETS.  
NOT AVAILABLE IN ONU

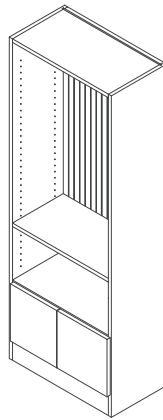


ABBREVIATION  
CMB

## BEADED INTERIOR BACK PANEL

BEADED INTERIOR BACK PANELS COVER  
THE FULL HEIGHT OF THE CABINET BACK  
AND ARE PRICED ACCORDINGLY. CABINET  
BACK PANEL IS REPLACED WITH A BEADED  
PANEL - DOES NOT ADD TO THE CABINET  
DEPTH. BIB MODIFICATION DOES NOT INCLUDE  
MATCHING VENEER INTERIOR ON SIDE WALLS,  
TOP, BOTTOM, AND SHELVES.

EX: TUB084 WILL HAVE 17 1/2 SQUARE FEET  
PRICED

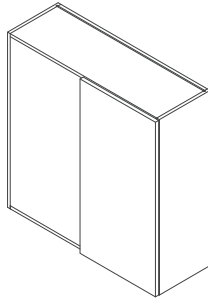


ABBREVIATION  
BIB

# modifications and specifications 15-11

## flush blind, reverse angle, finished, false - backs

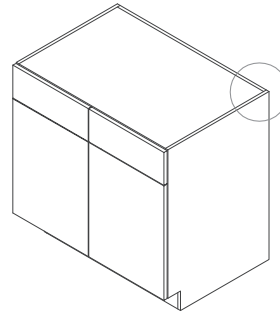
### FLUSH BLIND



FLUSH BLIND WILL BE FINISHED PLYWOOD INSERTED FLUSH INTO CABINET OPENING.

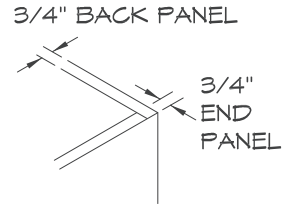
ABBREVIATION  
FLB

### FINISHED BACK



A FINISHED PANEL WILL REPLACE THE BACK OF THE CABINET - DOES NOT ADD TO CABINET DEPTH

ABBREVIATION  
FIN-BK



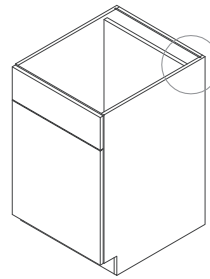
### HINGE UP/DOWN



10 1/2-INCH MIN. OPENING

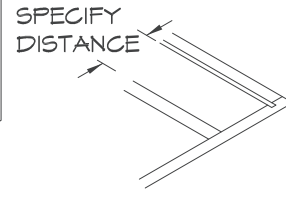
ABBREVIATION  
N/A

### FALSE BACK



SPECIFY DEPTH FROM FRONT OF CABINET

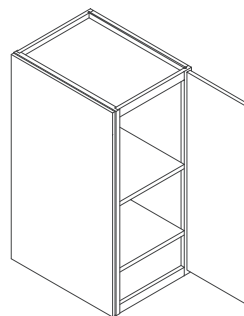
ABBREVIATION  
FALS-BK



### HINGED DOOR ON END

HINGED DOOR ON END WILL HAVE A FACE FRAME ON THE SIDE OF THE CABINET, MITERED CORNER, AND A WORKING DOOR ATTACHED.

AVAILABLE ONLY WITH FULL HEIGHT DOOR ON BASE CABINETS. DOOR ON END WILL ADD 3/4" TO CABINET WIDTH.



ABBREVIATION  
HDE

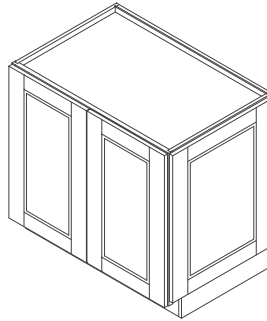
AVAILABLE ONLY IN AMENITY CABINETS. NOT AVAILABLE IN ONU

# 15-12 modifications and specifications end - decorative door, integral wainscot

## DECORATIVE DOOR ON END

ABBREVIATION  
DDE

DECORATIVE DOOR ON END INCLUDES A FLUSH FINISHED END WITH A FIXED DOOR PERMANENTLY ATTACHED. PLEASE SPECIFY ON BASE CABINETS IF FALSE DRAWER FRONT IS DESIRED. ADDS 3/4" TO WIDTH OF THE CABINET.

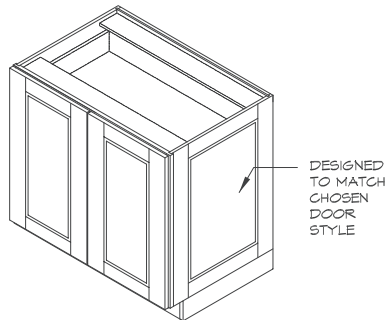


AVAILABLE ONLY IN AMENITY CABINETS. NOT AVAILABLE IN ON:U

## INTEGRAL WAINSCOT END

ABBREVIATION  
IWE-R/L

SIDE OF CABINET IS REPLACED WITH A WAINSCOT PANEL. THIS OPTION DOES NOT INCREASE THE WIDTH OF THE CABINET. IWE IS NOT AVAILABLE ON MITERED CORNER DOOR STYLES.

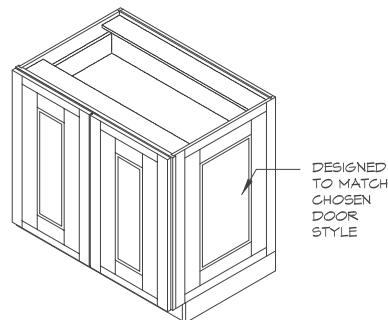


AVAILABLE ONLY IN AMENITY CABINETS. NOT AVAILABLE IN ON:U

## INTEGRAL WAINSCOT END - INSET

ABBREVIATION  
IWE-R/L

ON INSET OR BEADED INSET STYLES, SIDE OF CABINET IS REPLACED WITH A FACE FRAME AND FIXED DOORS. THIS OPTION DOES NOT INCREASE THE WIDTH OF THE CABINET. IWE IS NOT AVAILABLE ON MITERED CORNER DOOR STYLES. AVAILABLE IN INSET FRAMES.



AVAILABLE ONLY IN AMENITY CABINETS. NOT AVAILABLE IN ON:U

# modifications and specifications 15-13

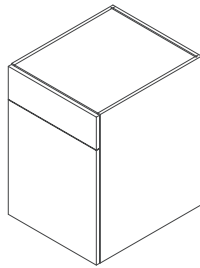
## none, side, valance, loose, flush - toe kicks

NO TOE KICK

REDUCES HEIGHT BY 4-INCHES

ABBREVIATION

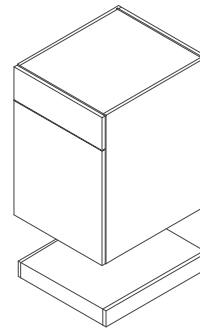
NTK



TOE KICK LOOSE

ABBREVIATION

TKL

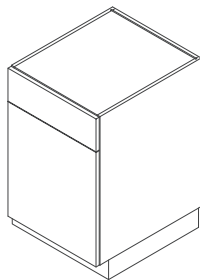


TOE KICK ON SIDE

ABBREVIATION

TK-R/L

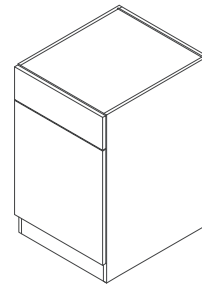
TOE KICK SHOWN ON  
RIGHT



FLUSH TOE KICK

ABBREVIATION

FTK



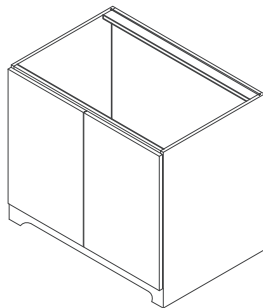
THIS MODIFICATION ADDS  
A RAIL (DROP EDGE) TO  
THE FRONT OF THE CABINET

VALANCE TOE KICK

ABBREVIATION

VTK

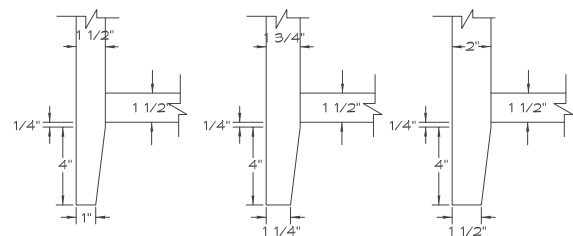
VALANCE TOE KICK HAS  
A TOE RAIL BEHIND  
DECORATIVE VALANCE.  
SEE "EXTEND VALANCE  
DOWN" MODIFICATION TO  
SEE AVAILABLE VALANCE  
PROFILES.



WIDE STILES WITH  
TAPERED LEGS

ABBREVIATION

N/A

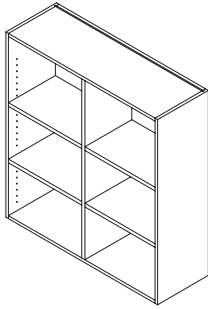


# 15-14 modifications and specifications center partition, pipe chase

CENTER PARTITION

ABBREVIATION

CP



PIPE CHASE

ABBREVIATION

CHS

